

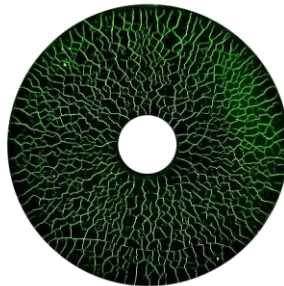


Equipment

Product information
Reference block type 1

Reference block type 1

with certificate; for the control of the indication sensitivity of the test medium during Magnetic Particle Inspection acc. to 9934-2



Description

The reference block 1 is a disc made of metal and used to control the magnetic particle suspension at Magnetic Particle Testing acc. to EN ISO 9934-2.

The reference block 1 has been magnetized residually. On the surface there are rough and precise cracks.

The serial number is stamped at the side.

Usage

Magnetic Particle Testing, coloured:

- Apply white contrast paint to reference block and allow to dry.
- Then apply coloured ready-to-use magnetic particle suspension (dipping or spraying) and allow excess solution to run off.
- Inspect the reference block under day light, in accordance with requirements of EN ISO 3059, and compare the indications with reference photo in delivered certificate.

Magnetic Particle Testing, fluorescent:

- Apply fluorescent ready-to-use magnetic particle suspension (dipping or spraying) and allow excess solution to run off.
- Inspect the reference block under UV light, in accordance with requirements of EN ISO 3059, and compare the indications with reference photo in delivered certificate.

Special notes:

- Soilings with e.g. oil or fad and strong magnetic fields can make the reference block useless.
- We recommend to use several reference blocks for different Magnetic Particle test methods (coloured/fluorescent)
- Use a lightly wet cloth for cleaning. We recommend to clean the reference block in an ultrasonic cleaning bath.

Art. No. G19A

08.09.2016

Technical changes reserved!